



PRESENTED BY



ROLEX

# NEW YORK YACHT CLUB RACE WEEK AT NEWPORT

Presented by ROLEX

*September 23-26, 2020*  
Newport, Rhode Island

## SAILING INSTRUCTIONS

### 1 RULES

- 1.1 The regatta will be governed by the rules as defined in *The Racing Rules of Sailing* (RRS) including ORC rules and the Melges IC37 Class Rules.
- 1.2 Safety Equipment Requirements:
  - All boats shall minimally comply with the US Nearshore section of the NOR Addendum 1 – US Safety Equipment Requirements (USSER) and shall comply with their class rules, where applicable.
  - USSER 2.4.2, 2.4.3 and 2.4.4.1 through 2.4.9 regarding Hull and Structure: Lifelines shall apply, except that yachts not normally rigged with lifelines are exempt for these requirements and shall wear approved PFDs at all times while racing. This requirement does not apply to Classics, 6 Metres or 12 Metres, although they are strongly encouraged to wear PFDs.
  - In the event of a conflict between these requirements and applicable class rules, the class rules shall apply.
- 1.3 The current ORC Rating Systems shall apply to boats racing under ORC.
- 1.4 The current Melges IC37 Class Rules shall apply to all boats racing in the Melges IC37 Class, except as noted in these sailing instructions.
- 1.5 Liability Waiver and COVID-19 Release: No crew shall be aboard a yacht while racing unless he/she has executed the online Liability Waiver Form and COVID-19 Release. The Liability Waiver and COVID-19 Release Forms are available on the Race Week website. Registration will not be complete without receipt of a complete Liability Waiver and COVID-19 Release form from each crew member.

### 2 COMMUNICATION: NOTICES, ANNOUNCEMENTS, VHF CHANNELS

- 2.1 Notices, including race documents, results, and amendments, shall be posted on the online Official Notice Board. Protest Committee information, including protest time limits and hearing schedules, will be posted on the online Protest Committee Notice Board. Both online boards are located on the Race Week webpage.
- 2.2 Any change to the sailing instructions will be posted before 0900 on the day it will take effect, except that any change to the schedule of races will be posted by 2000 on the day before it will take effect.
- 2.3 In addition to the signals described in SI 3.3, the Race Committee will endeavor to announce the circle assignments, format and the rendezvous locations as described in SI 5 and SI 6 at 0900 over VHF Channel 72. The failure to make this announcement or for a boat to hear this announcement will not be grounds for a boat to request redress. This changes RRS 62.1(a).
- 2.4 After the rendezvous locations and any other regatta announcements have been made, Race Committee signal boats will monitor and communicate with their respective classes on the circle VHF channels published in SI 2.5.

- 2.5 VHF Channels – The Race Committee VHF channels for each circle are shown below:  
Blue Circle VHF Channel 72  
White Circle VHF Channel 69
- 2.6 Each yacht shall carry a VHF radio capable of communicating with the Race Committee on their circle channel.

### 3 SIGNALS MADE ASHORE

- 3.1 Flag signals will be flown from the flagpole at Harbour Court.
- 3.2 When pennant “AP” is displayed ashore, “one minute” is replaced with “not less than one hour” in race signal “AP”.
- 3.3 Signals designating the rendezvous locations for all circles will be displayed at 0900 each day from the western yardarm of the flagpole at Harbour Court.

### 4 SCHEDULE OF RACES

- 4.1 The warning signals each day are scheduled for 1100 for all circles.
- 4.2 For all classes on Saturday, September 26, the initial warning signal for the final race of the first class will not be made after 1500hrs. The warning signal for a start following one or more general recalls or for subsequent classes may be made after 1500.

### 5 CLASSES AND IDENTIFICATION

- 5.1 **Classes** – Each class will be given a numeral designation and be assigned each day to one of two circles (Blue and White). Note that a class may sail in different circles and be assigned different numeral designations on different days.
- 5.2 **Format** – The Race Committee will notify competitors (no later than 1900 on the day before they will take effect) of the circle assignments for each class and the intended type of racing for the following day:  
a) Navigator or Middle Distance Races – SI Addendum A (using government marks and racing marks on Narragansett Bay and/or Rhode Island Sound).  
b) Drop Mark Races – SI Addendum B (using inflatable buoys on Rhode Island Sound and/or Narragansett Bay).
- 5.3 **Scratch Sheets** – Final Scratch sheets will be posted on the online Official Notice Board as soon as possible following registration.
- 5.4 **Class Flags** – Unless indicated on the scratch sheet, each boat shall display the numeric or alphabetic flag corresponding to her class designation, as shown on the scratch sheet, from her backstay approximately six feet above the deck from the warning signal for the first class on her circle until she is no longer racing. Boats without a permanent backstay shall conspicuously display these flags in an alternate position in the aft part of the boat.
- 5.5 **Backstay Flags** – Each yacht shall display the Rolex backstay flag and bow stickers provided at registration while racing.

### 6 RENDEZVOUS LOCATIONS

- 6.1 Circle rendezvous locations are listed below and will be designated as described in SI 3.3. See SI Addendum C – NYYC Primary Race Areas.

#### **Rhode Island Sound:**

- Area “A” -in the vicinity of 160° M for 1.2 NM from R “2” QR Whistle marking Brenton Point
- Area “B” -in the vicinity of 120° M for 2.5 NM from R “2” QR Whistle marking Brenton Point
- Area “C” -in the vicinity of 275° M for 3.0 NM from R “2” QR Whistle marking Brenton Point
- Area “D” -in the vicinity of 225° M for 2.0 NM from R “2” QR Whistle marking Brenton Point
- Area “E” -in the vicinity of 165° M for 5.0 NM from R “2” QR Whistle marking Brenton Point
- Area “F” -in the vicinity of 145° M for 3.5 NM from R “2” QR Whistle marking Brenton Point

#### **Newport Harbor and near Newport Bridge:**

- Area “K” -between Goat Island and Rose Island
- Area “M” -in the vicinity of R “12” west of Rose Island

#### **North of Newport Bridge:**

- Area “O” -in the vicinity of Potter Cove (just north of west end of Newport Bridge)
- Area “R” -in the vicinity of 200° for 0.5 NM from Halfway Rock
- Area “T” -in the vicinity of G “7” QG off Quonset Point

- 6.2 Once on station, the Race Committee may announce the lat/long positions of the signal boat and starting mark over the circle VHF channel. Failure to make such an announcement, nor the timing of any announcement, shall not be grounds for a boat to request redress. This changes RRS 62.1(a).

## 7 CHECK-IN

- 7.1 **Check-in on Land:** One representative only from each yacht shall check-in at the NYYC Sailing Center at Harbour Court during the registration times so designated in the Notice of Race.
- 7.2 **Check-in on Water:** Prior to their course signal each day, each yacht shall check in with the Race Committee signal boat by sailing or motoring by the stern of the signal boat and announcing their sail number.
- 7.3 **Check-in for Middle Distance Race:** Prior to their course signal, each yacht shall check in with their Race Committee check-in boat displaying an L flag that will be anchored outside the starboard end of the starting box by sailing or motoring by the stern of the check-in boat and announcing their sail number.
- 7.4 Boats retired shall inform the Race Committee on their circle VHF channel or by calling (401) 845-9633.

## 8 COURSES & MARKS

The courses and marks are described in the SI Addenda as shown:

Courses using Government Marks	SI Addendum A
Drop Mark Courses	SI Addendum B

## 9 THE START

- 9.1 The intended order of starts for a Middle Distance Race will be included in the Race Committee's announcement on VHF Channel 72 at 0900. See SI Addendum A.
- 9.2 A boat that does not start within 10 minutes after her starting signal will be scored Did Not Start without a hearing. This changes RRS A4 and A5.
- 9.3 The starting line will be between a staff displaying an orange flag on the Race Committee signal boat and either a staff displaying an orange flag on the port-end Race Committee boat or the course side of the port-end starting mark.
- 9.4 Boats whose warning signal has not been made shall avoid the starting area from the time of the course signals for the first start in the sequence until the warning signal for their class.
- 9.5 Middle Distance Race: The Race Committee may delineate a starting box by placing two or more buoys to leeward of the starting line to form a starting box area between these buoys and the starting line. Boats shall keep outside the starting box from the time of the course signals for a race until the warning signal for their class.
- 9.6 The Race Committee will endeavor to hail boats observed to be OCS at the start over their respective circle VHF channel and/or by voice. Failure to hail, the timing or order of any such hails, will not be grounds for a request for redress. This changes RRS 62.1(a).

## 10 CHANGE OF COURSE

See Addendum B – Drop Mark Courses.

## 11 THE FINISH

The finishing line will be between a staff displaying a blue flag on the Race Committee signal boat and the course side of the finishing mark as described in the relevant SI Addendum.

## 12 PENALTY SYSTEM

- 12.1 If class rules specify a penalty, a boat that may have broken a rule of Part 2 while racing may take a penalty at the time of the incident as provided in her class rules. If the class rules do not specify a penalty, RRS 44.1 is changed so that a boat can either take a penalty in accordance with RRS 44.1 or a scoring penalty in accordance with RRS 44.3.
- 12.2 The Protest Committee may impose suitable penalties, other than disqualification, for violations of the World Sailing Offshore Special Regulations or other non-Part 2 rules. This changes RRS 64.1.
- 12.3 A boat that has taken a penalty shall complete an online penalty acknowledgement form or a paper form available from the Protest Secretary and submit/file it with the Protest Secretary no later than the end of protest time.

## **13 TIME LIMIT**

- 13.1** For courses designated in accordance with SI Addendum A1.4, the time limit for the first boat to sail the course and finish is five hours. Yachts failing to finish within 90 minutes after the first boat sails the course and finishes will be scored Time Limit Expired (TLE) and scored points as described in SI 15.4. This changes RRS 35, A4 and A5.
- 13.2** For courses designated in accordance with SI Addendum B, the time limit for the first boat to sail the course and finish is three hours. Yachts failing to finish within 45 minutes after the first boat sails the course and finishes will be scored Time Limit Expired (TLE) and scored points as described in SI 15.3. This changes RRS 35, A4 and A5.

## **14 PROTESTS AND REQUESTS FOR REDRESS**

- 14.1** The intent to protest and the boat being protested shall be communicated to the Race Committee at the first reasonable opportunity after the boat intending to protest finishes until acknowledged by the Race Committee. This changes RRS 61.1(a).
- 14.2** Written protests or requests for redress shall be submitted through the online protest form as soon as possible, but not later than one hour after the Race Committee signal boat has docked. The time limit for filing a protest will be posted on the online Official Notice Board.
- 14.3** Protests will be heard via a conference call format as soon as possible. The protest committee will attempt to hear protests in the order of receipt. Guidelines for these virtual protest hearings are available on the Race Week webpage.

## **15 SCORING**

- 15.1** A boat's series score will be the total of her race scores. This changes RRS A2 and Melges IC37 Class Rule H.3.1.
- 15.2** One race is required to be completed to constitute a series.
- 15.3** Boats that have started and fail to finish within the finish window listed in SI 13.1 or SI 13.2 for any reason, shall, without a hearing, be scored Time Limited Expired (TLE) by the Race Committee and be assigned points equal to the number of boats in her class that have sailed the course and finished within the time limit, plus two. This changes RRS A4.1, A4.2 and A5.
- 15.4** Teams competing for team trophies will be scored in accordance with the Notice of Race.
- 15.5** For scoring purposes, the distance used (as needed) will be that as calculated by the Race Committee.
- 15.6** For drop mark courses, the ORC class will be scored using Triple Number Time-on-Time Windward/Leeward. For distance races, the ORC class will be scored using Triple Number Time-on-Time Coastal/Long Distance. The decision on the Triple numbers system wind ranges (Low, Medium or High) will be at the sole discretion of the Race Committee and shall not be grounds for a boat to request redress.
- 15.7** PHRF will be scored Time-on-Distance.

## **16 PRIZES**

- 16.1** Prizes will be awarded as described in the Notice of Race.
- 16.2** Additional prizes may be awarded at the discretion of the OA.

## **17 WAIVER AND RELEASE OF LIABILITY**

- 17.1** Competitors participate in the regatta entirely at their own risk. See RRS 4, Decision to Race. The Organizing Authority, New York Yacht Club, and any official sponsors will not accept any liability for material damage or personal injury or death sustained in conjunction with or prior to, during or after the regatta. Attention is also drawn to RRS 46 and USSER 1.2, Responsibility.
- 17.2** As a condition of entry, each owner, skipper and individual participating crew member shall submit an online liability waiver/media release and a COVID-19 Release. The fully executed [Waiver & Release of Liability form](#) and COVID-19 Release shall be submitted prior to racing. The waiver form link can be found on the Race Week website.

## **18 SAFETY REGULATIONS**

- 18.1** Restricted Channels: Competitors are reminded that Narragansett Bay and its approaches are considered restricted channels for commercial traffic and other vessels restricted in their ability to maneuver. Competitors must comply with the government right-of-way rules when in proximity to commercial or privileged marine traffic.

**18.2** Newport Security Zone: In the event there is racing in Narragansett Bay, competitors should be aware of heightened security around the Navy base in Newport just to the north of the Newport Jamestown Bridge. The area may be defined by a series of white buoys marking the Newport Security Zone along the coast of the Naval Facilities from Coasters Harbor to the breakwater at the north end of Coddington Cove and the line defined by the buoys shall rank as an obstruction. Yachts shall not enter this area. A Navy patrol boat monitors the area and vessels navigating in the Exclusionary Zone may face action by Coast Guard and Naval authorities.

**18.3** Additional Restricted Areas: There may be additional restricted areas due to Navy activity, shipping or fishing operations as may be described in an amendment to the sailing instructions.

**19** **NOTES**

**19.1** The Race Week website can be found at <https://nyyc.org/2020-race-week>.

**19.2** For further information please contact:

New York Yacht Club, Harbour Court  
5 Halidon Avenue  
Newport, RI 02840

Tel: 401-845-9633

Fax: 401-846-3303

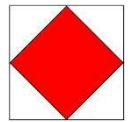
Email: [sailingoffice@nyyc.org](mailto:sailingoffice@nyyc.org)

# SAILING INSTRUCTIONS

## **ADDENDUM A – COURSES USING GOVERNMENT MARKS**

### **A1 COURSES**

- A1.1** All boats shall pass through the center span only for any course passing under the Jamestown Verrazano Bridge and/or the Newport Jamestown Bridge in which case the center span bridge piers define a gate mark.
- A1.2** Government marks shall have no required side except when designated as a rounding mark.
- A1.3** No later than the warning signal, the Race Committee will display the course to be sailed. The Race Committee will endeavor to announce the designated courses over the circle VHF channel. Failure to make such an announcement shall not be grounds for a boat to request redress. This changes RRS 62.1(a).
- A1.4** **COURSE 1** – If number one is displayed on the course board, the course will be designated using buoys as described in SI Addendum A2. The Race Committee will list the marks in the order to be rounded and the required side to leave each mark. The course will be:
- Start.
  - Round the marks in the designated order leaving each mark to the designated side.
  - Finish between a staff displaying the blue flag on the Race Committee boat and the nearby finishing mark. Note that the intended finishing line will be set at the starting location of the Race Committee signal boat.
- A1.5** The Race Committee vessel at the finish may or may not be the same vessel that started the race.
- A1.6** If at the start, Flag “F” is displayed on a separate pole, the finishing line will be between a staff displaying a blue flag on a Race Committee boat and the nearby finishing mark approximately 0.4 NM north of the Fl R 6 sec Horn “2” on the northern point of Fort Adams. In the absence of the Race Committee boat and/or finishing mark, the finishing line will be on a bearing of 120° M from G “3” Gong southeast of Rose Island.



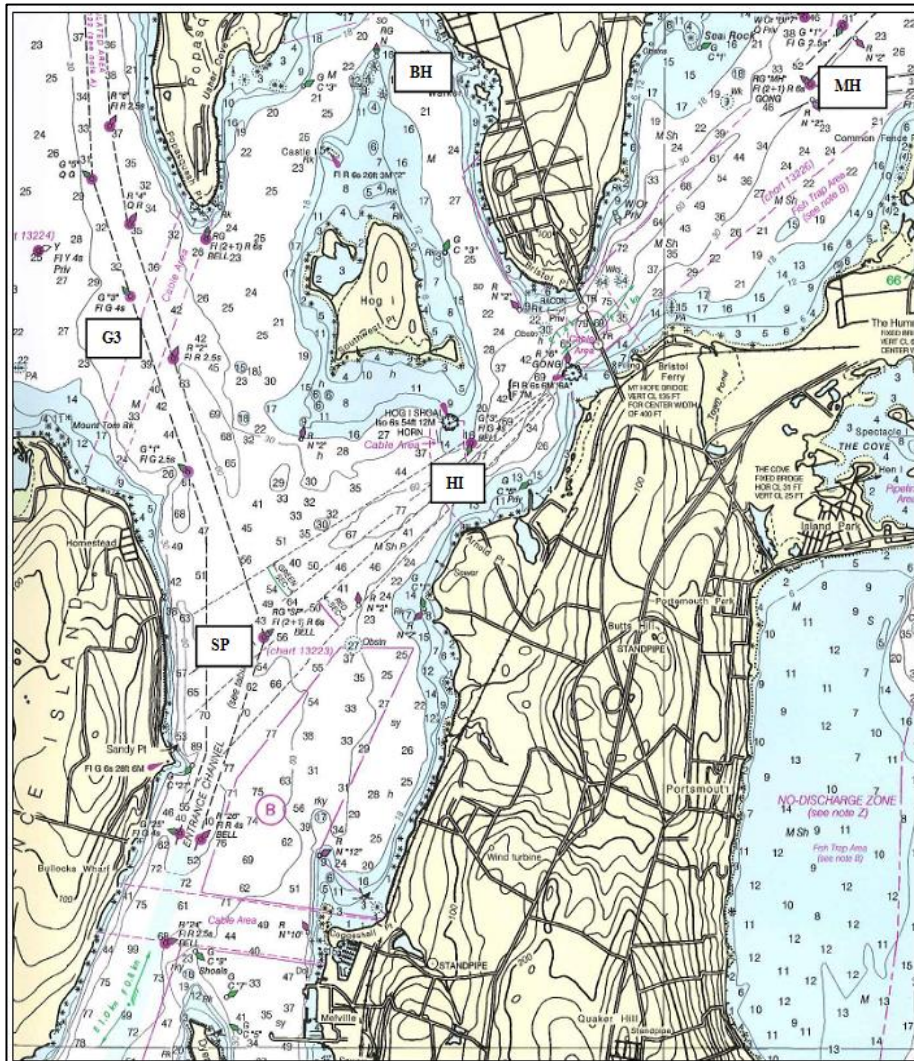
### **A2 MARKS**

- A2.1** The starting mark will be a green tetrahedron buoy.
- A2.2** The finishing mark will be a pink tetrahedron buoy. The finish mark if using an “F” finish as described in A1.6 will be a pink tetrahedron buoy.
- A2.3** Special Marks “E” and “L”, if used, will be the same as the original mark colors for each circle as described in SI B2.1.
- A2.4** If used, Special NYYC Temporary Inflatable Race Marks 16 and 17 as designated on the current South Bay Race Chart will be orange tetrahedron buoys.
- A2.5** All buoys listed on the current *South Bay Race Chart* provided at registration may be used in Course 1. In addition, the marks listed in SI Addendum A2.6, A2.7 and A2.8 below are additional rounding marks that might be used.
- A2.6** **Special Mark “E”**
- a) The Race Committee may add a new first mark “E” to any course described in SI Addendum A1.
  - b) If special mark “E” is used, the Race Committee will list “E” along with the designated rounding side as the first mark on the course board as described in SI A1.4.
  - c) The magnetic bearing and distance (in nautical miles to the nearest tenth) to special mark “E” will be posted on a whiteboard on the Race Committee signal boat.
- A2.7** **Special Mark “L”**
- a) The Race Committee may set special mark “L” approximately 0.1 NM to windward of the start line.
  - b) If special mark “L” is used, it will be listed as a mark as described in SI Addendum A1.4.

## A2.8 GOVERNMENT MARKS AND ISLANDS

See charts 13205, 13218, 13223, 13226 and 13224 for more detail.

<u>Description</u>	<u>Approx. location</u>
1 Gould Island	41° 32.00' N; 071° 20.67' W (center of island)
3 Hope I (east of Quonset) including R "2" at the southwest end and G C "1" at the northeast end	
4 Conanicut Island	
5 RW "NB" Mo(A) WHIS	41° 23.00' N; 071° 23.36' W
7 R "2" Fl R 4s WHIS south of Point Judith	41° 18.46' N; 071° 28.35' W
8 RW "SR" Mo(A) WHIS	41° 25.76' N; 071° 13.38' W
1BI G "1 BI" Fl G 4s BELL north of Block I	41° 15.49' N; 071° 34.55' W
M Block Island including:	
R "4" Fl R 6s WHIS off Southwest Pt	41° 08.73' N; 071° 37.35' W
Black Rock Pt. Buoy 2	41° 08.42' N; 071° 35.74' W
U Buzzards Light Tower Fl 2.5s 67ft 17M Horn	41° 23.82' N; 071° 02.08' W
PR Prudence Island including R "8" northwest of Patience Island and RG N at the northern end	
SP RG "SP" Fl (2+1) R 6s BELL	41° 36.92' N; 071° 17.59' W
G3 G "3" Fl G 4s (approx. 0.5 NM sw of Popasquash Neck)	41° 38.53' N; 071° 18.46' W
MH RGR "MH" Fl (2 +1) R 6s GONG in Mt. Hope Bay	41° 39.54' N; 071° 14.04' W
BH RGR N "Middle Ground Buoy" approx. 0.8 NM n of Hog I	41° 39.68' N; 071° 16.87' W
HI G "3" Fl G 4s BELL approx. 0.4 NM south southeast of Hog I	41° 37.79' N; 071° 16.29' W



Marks near Prudence Island, Bristol and Mt. Hope Bay

# SAILING INSTRUCTIONS

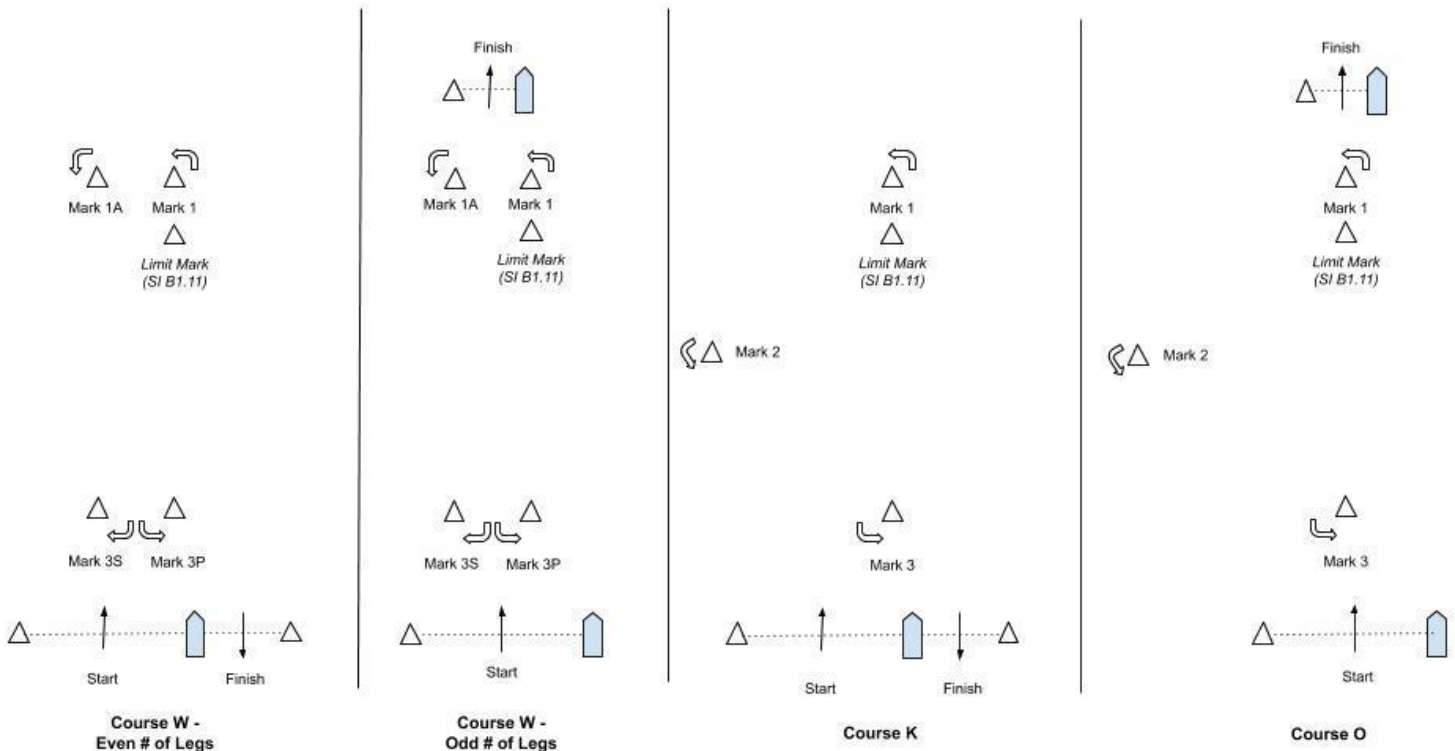
## ADDENDUM B – DROP MARK RACES

### B1 COURSES FOR DROP MARK RACES

**B1.1** The Race Committee signal boat will signal the course on a course board. Course designations are as follows:

- W2 Start – 1 – 1A – Finish (downwind)
- W3 Start – 1 – 1A – Gate (3S/3P) – Finish (upwind)
- W4 Start – 1 – 1A – Gate (3S/3P) – 1 – 1A – Finish (downwind)
- W5 Start – 1 – 1A – Gate (3S/3P) – 1 – 1A – Gate (3S/3P) – Finish (upwind)
- W6 Start – 1 – 1A – Gate (3S/3P) – 1 – 1A – Gate (3S/3P) – 1 – 1A – Finish (downwind)
- K Start – 1 – 2 – 3 – 1 – Finish (downwind)
- O Start – 1 – 2 – 3 – 1 – 3 – Finish (upwind)

**B1.2** Course Diagrams:



**B1.2** Course “W” is a Windward/Leeward course with a windward offset mark. A board indicating the number of LEGS to be raced will be shown next to the letter “W”. The distance between the windward mark and the offset mark shall not count as a leg for the purposes of indicating the number of legs.

**B1.3** Course “K” is a Triangle/Windward/Leeward course.

**B1.4** Course “O” is a Triangle/Windward/Leeward/Windward course.

**B1.5** The leeward mark for Courses “W”, “O”, and “K” will be an inflatable mark(s) set approximately 0.10 NM to windward of the starting line. A gate mark 3S/3P may be used for Course “W”.

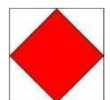
**B1.6** The course designation, distance and bearing to the windward mark will be displayed on a board.

**B1.7** Marks, including the windward offset mark, shall be rounded in order and always left to port, except that a gate, when used, shall be rounded as described in RRS 28.2(c).

**B1.8** There will be a windward offset mark adjacent to the windward mark for courses W2, W3, W4, W5 and W6.

**B1.9** Special Finish Mark “F”

If flag “F” is displayed on a separate pole, the finishing line for that class will be between a staff displaying a blue flag on a Race Committee boat and the nearby pink finishing mark approximately 0.4 NM north of the Fl R 6 sec Horn “2” on the northern point of Fort Adams. In the absence of the Race Committee boat and/or finishing mark, the finishing line will be on a bearing of 120° M from G “3” Gong southeast of Rose Island. This changes SI Addendum B1.1, SI Addendum D1.2, D1.7 and D2.1.





- B1.10 Melges IC37:** The Race Committee will set a pink inflatable limit mark approximately 6-8 boat lengths to leeward of the windward mark with the intention of keeping boats away from the port tack layline.
- The limit mark shall be left to port on both the upwind and the downwind legs.
  - In the event of a change of course to the windward mark after the first windward mark rounding in that race, the limit mark will not be set.
  - The location of the limit mark or the failure of the Race Committee to set the limit mark shall not be grounds for a boat to request redress. This changes rule 62.1(a).

**B1.11 ORC 1 and ORC 2:** For all “W” courses, the Race Committee will set both a long windward mark and offset, and a short windward mark and offset. The distance to the long windward mark and the distance to the short windward mark will be displayed on a course board. ORC 1 shall use the long mark. ORC 2 shall use the short mark.

## **B2 MARKS FOR DROP MARK COURSES**

**B2.1** Marks will be inflatable buoys as follows:

<u>Circle</u>	<u>Original marks</u>	<u>Starting</u>	<u>Finishing</u>	<u>Change marks</u>
WHITE	Orange	Green	Pink	Yellow
BLUE	Yellow	Green	Pink	Orange

## **B3 COURSE CHANGE**

**B3.1** To change the next leg of the course, the Race Committee will lay a new mark (or move the finishing line) and remove the original mark as soon as practicable. When in a subsequent change a new mark is replaced, it will be replaced by an original mark.

**B3.2** The race committee may change the course by up to five degrees in bearing and/or 0.2 nm in length without a signal or change of mark color. This changes RRS 33.

**B3.2** In addition to the requirements in RRS 33, the Race Committee will attempt to announce any course change on the respective circle VHF channel. Failure to make such an announcement shall not be grounds for a boat to request redress. This changes RRS 62.1(a).

## **B4 THE FINISH**

**B4.1** The finishing line will be between a staff displaying a blue flag on a Race Committee boat and the nearby finishing mark.

- For Course “W”, with an odd number of legs, and Course “O”, the finish line will be located approximately 0.1 NM to windward of the windward mark.
- For Course “W”, with an even number of legs, and Course “K”, the finish line will be located approximately 0.1 NM to leeward of the leeward mark and the finishing mark will be on the opposite side of the Race Committee signal boat from the starting mark. See diagrams in SI Addendum B1.1.

**B4.2** The Race Committee vessel at the finish may or may not be the same vessel that started the race.

**SAILING INSTRUCTIONS**  
**ADDENDUM C – NYYC PRIMARY RACE AREAS**

